



Play Panel Cart Assembly Instructions





Step 1:

**Attach the casters to the frame
using $\frac{3}{8}$ " x 1" Black Button Head Bolt
with $\frac{3}{8}$ " Nylon Self Locking Nuts**

Step 2:

**Attach wheels to casters
(Instructions to wheels starting on
page 6)**

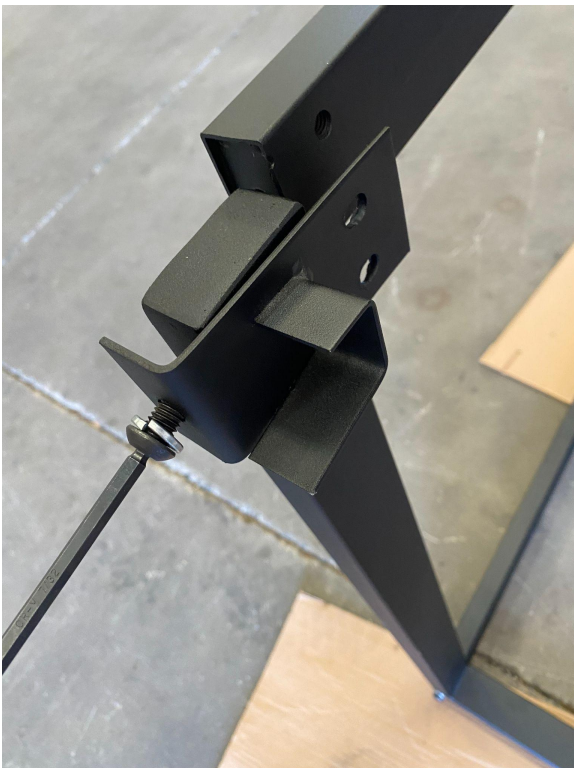


Step 3:

**Attach uprights to base using
 $\frac{3}{8}$ " x 3" Button Head Bolt**



Step 4:
Attach Brackets using
 $\frac{3}{8}$ " x 1" Button Head Bolt



Step 5:
Attach top and Support bracket using
 $\frac{3}{8}$ " x 3" Button Head Bolt
and $\frac{3}{8}$ " x 1" Button Head Bolt



Step 6:
Attach pivoting bracket using
 $\frac{3}{8}$ " x 3" Button Head Bolt and
 $\frac{3}{8}$ " x 1" Button Head Bolt



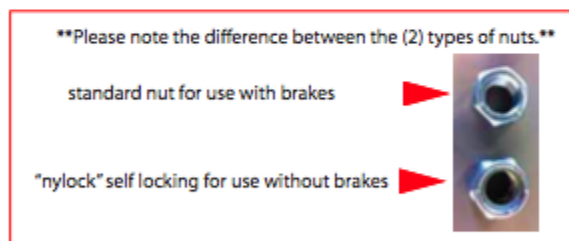
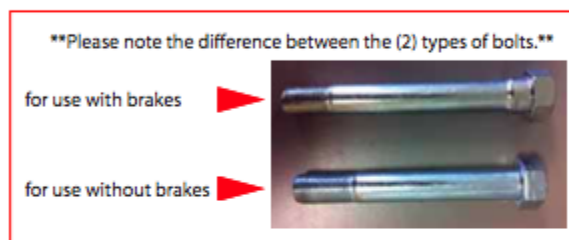
Step 7:
Attach top cross bar using
5/16" x 3" Hex Bolt and
5/16" Nut

PART I - Caster & Wheel assembly (without brakes)

PARTS LIST

- (1) wheel assembly with hub and bearings (a)
- (remove wire retainer - **do not disassemble**)
- (1) bolt (b)
- (1) "nylock" self locking nut (c)

*note - for carts with (2) fixed casters & (2) swivel casters, wheels without brakes should be installed on fixed casters.



ASSEMBLY

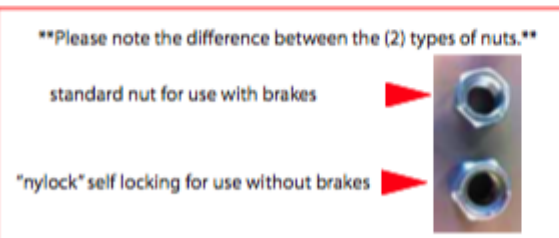
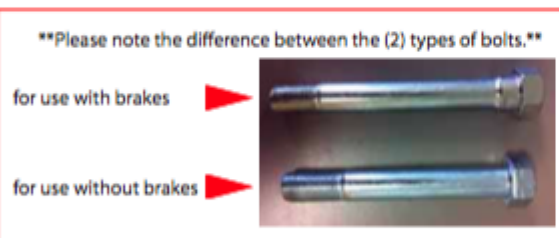
- 1 - invert cart base on work surface as shown
- 2 - align wheel assembly (a) with bolt holes in caster body
- 3 - insert bolt (b) through caster body and wheel assembly with the bolt head toward the outside edge of the cart.
- 4 - attach nut (c) to bolt (b) and tighten firmly.

PART II - Caster & Wheel assembly (with brakes)

PARTS LIST

- (1) wheel assembly with hub and bearings (a)
- (remove wire retainer - **do not disassemble**)
- (1) wheel stop (b)
- (1) bolt (c)
- (1) nut (d)
- (1) lock washer (e)
- (1) wave spring washer (f)
- (1) brake lever (g)

*note - for carts with (2) fixed casters & (2) swivel casters, wheels without brakes should be installed on fixed casters.



wave spring washer detail

PART II - Caster & Wheel assembly (with brakes)

ASSEMBLY

- 1 - invert cart base on work surface as shown
- 2 - insert bolt (c) through wave spring washer (f) and brake lever (g) with brake lever tabs facing toward the bolt head



- 3 - hold wheel stop (b) against swivel caster with wheel stop tab inserted in cutout as shown



- 4 - insert parts assembled in step 2 through bolt hole in wheel stop (b) and swivel caster with "off" and "on" brake lever labels facing DOWN as shown.



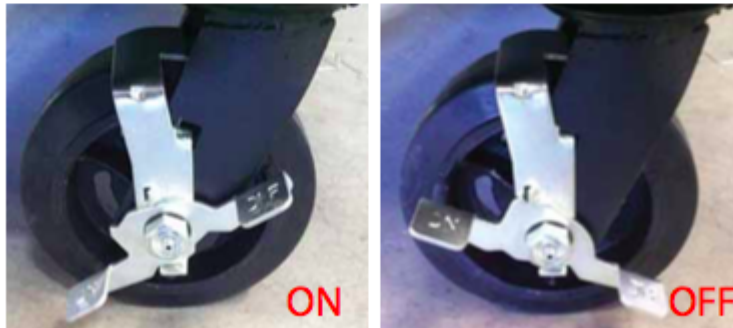
PART II - Caster & Wheel assembly (with brakes)

ASSEMBLY (continued)

5 - thread lock washer (e) onto end of bolt (c)



6 - attach nut (d) to bolt (c) and tighten firmly



FINISHED ASSEMBLY